



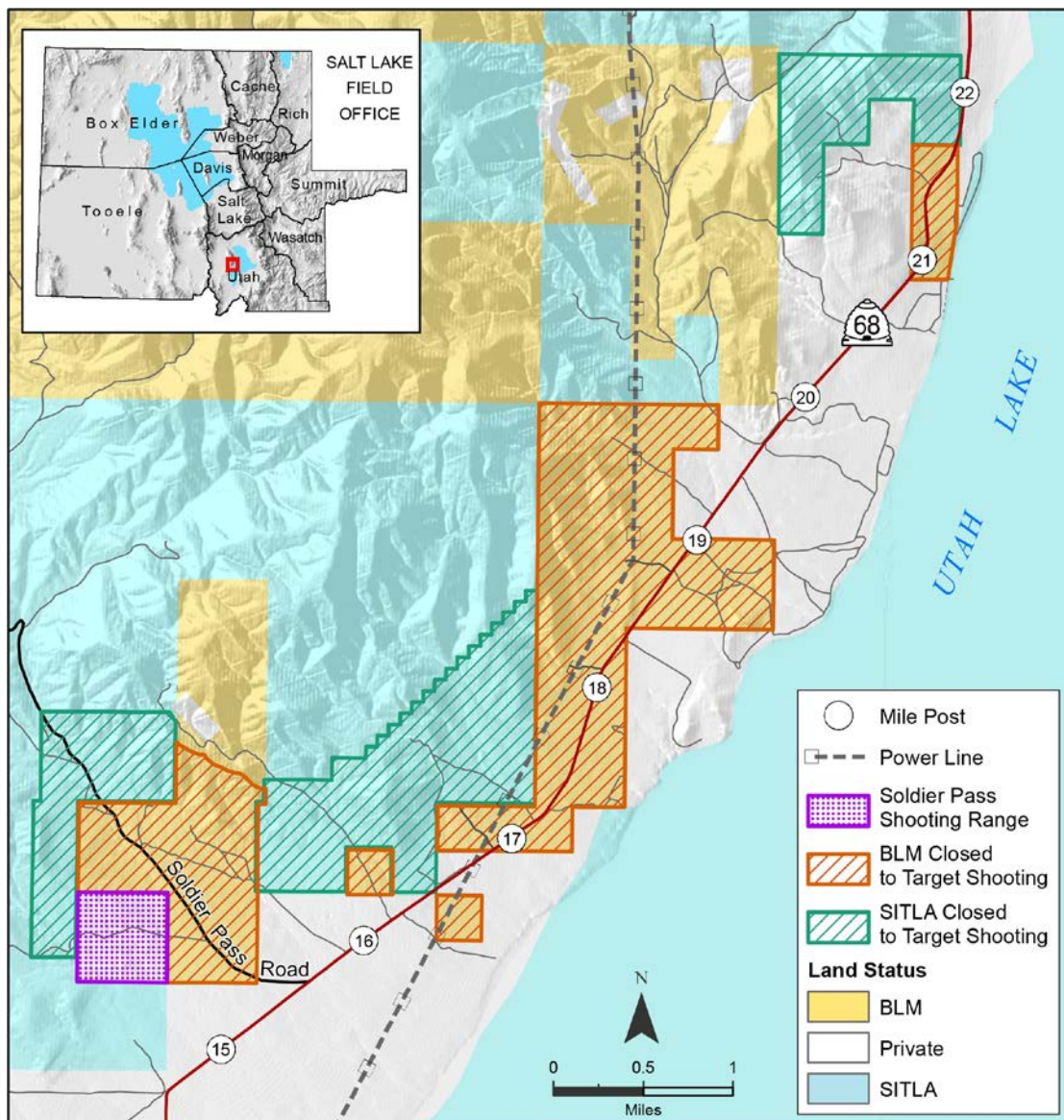
Lake Mountains Target Shooting Closure

Closure is necessary for public safety and resource protection, including Native American petroglyphs.

A long-term target shooting closure is in effect for 2,004 acres in the Lake Mountains area, replacing the 900 acres temporary closure in place since 2012.

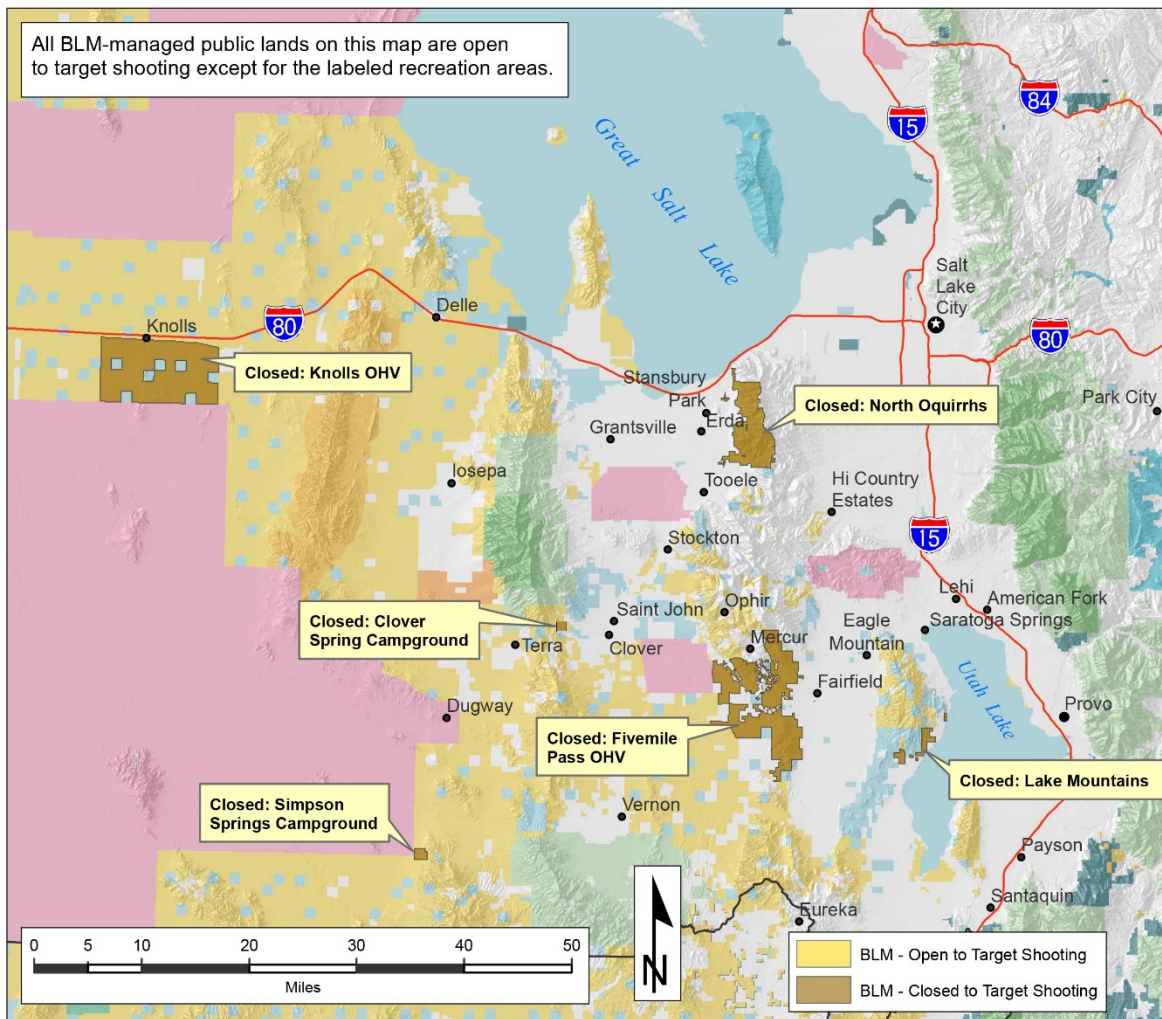
The closure area continues to be open for hunting during legally established hunting seasons. Other recreational activities are permitted in the area, including hiking, biking, motorized vehicle-use, and sightseeing.

Utah County's Soldier Pass Shooting Range, on the southeastern flank of the Lake Mountains, is now open.





Open Target Shooting Areas and Closures on BLM Managed Lands



Quick Tips for Responsible Shooting

- Shoot in locations with safe backstop
- Shoot away from people, other shooters, and vehicles
- Respect public and private property
- Shoot away from infrastructure (roads, trails, power lines, fences, etc.)
- Use appropriate ammunition
- Tracers and incendiary ammunition is prohibited year-round
- To reduce risk of wildfire, steel core/jacket ammo is prohibited from June through September
- Use appropriate targets: paper, cardboard, or clay. No glass, plastic, or metal
- Exploding targets are prohibited
- Clean up trigger trash
- Respect cultural artifacts

